

12

24

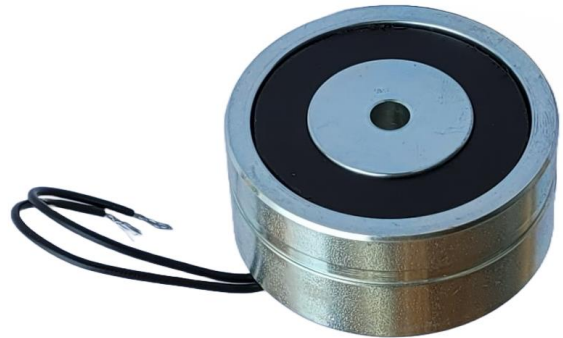
48

Vdc

Elettromagnete per uso industriale, serie SEM.  
Trattiene oggetti di natura ferrosa quando è alimentato alla tensione nominale.

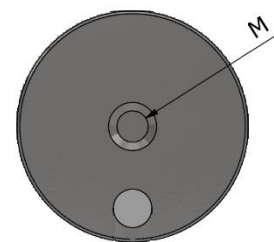
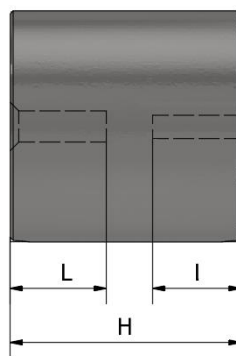
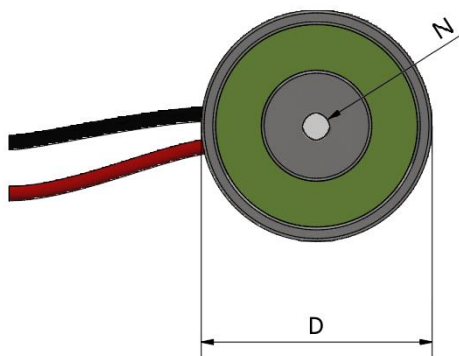
Togliendo l'alimentazione l'oggetto viene rilasciato.

*Electromagnet for industrial use, SEM series.  
It holds ferrous objects when powered at the rated voltage.  
By removing the power supply the object is released.*

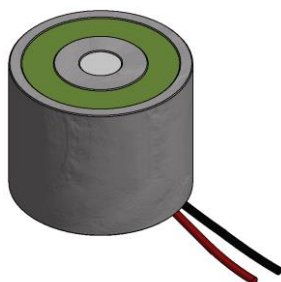


Diametro	Altezza	Forza di tenuta	Potenza assorbita	ED	Fissaggio	Foro	Lunghezza cavi	Spessore ancora *	Peso
Diameter D	Height H	Holding force	Nominal Power		Fixing MxL	Hole NxI	Cable length	Thickness armature *	Weight
mm	mm	N	w	%	mm	mm	mm	mm	g
50	22	600	1.4	100	M8x10	6.1x10	200 <sup>1</sup>	7	275
60	33	1150	2.4	100	M8x20	6.1x10	200 <sup>1</sup>	8	565
70	39	1550	2.4	100	M8x25	6.1x10	200 <sup>2</sup>	10	930

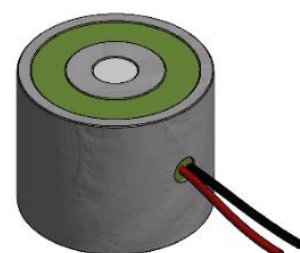
\* valori minimi per ottenere la massima forza di tenuta / minimum values to obtain the maximum holding force



<sup>1</sup> Uscita fili dal basso



<sup>2</sup> Uscita fili frontale



ESEMPI COSTRUTTIVI ED ACCESSORI  
CONSTRUCTION EXAMPLES AND ACCESSORIES

Costruzione standard  
Standard construction



SEM050022AF2000  
SEM060033AF2000  
SEM070039AF2000

+ base



SEMB50022AF2000  
SEMB60033AF2000  
SEMB70039AF2000

IP67



SEM070039GP0000

IP67 + base



SEMB70039GP0000

Disco  
Disk



S00060 - 55x7mm M5  
S00110 - 65x8mm M5  
S00160 - 75x10mm M6

Ancora fissa  
Fixed armature



S02060  
S02110  
S02160

Ancora snodata  
Jointed armature



S01060  
S01110  
S01160

Elementi in plastica per / plastic elements for: SEMB5..., SEMB6..., S02060, S02110, S01060, S01110, S01160

Elementi in ferro per / steel elements for: SEMB7..., S02160

COME ORDINARE / HOW TO ORDER

SEM 0 5 0 022 D F 02 00

SERIE / SERIES

ACCESSORI / ACCESSORIES  
0=standard B=+base

DIAMETRO / DIAMETER  
5=50mm 6=60mm 7=70mm

VOLT DC / VDC POWER SUPPLY  
0=24 1=12 2=48 (VAC: solo/only SEMx7)

ALTEZZA / HEIGHT mm  
022=22mm 033=33mm 039=39mm

VARIANTI / VARIANTS 00=standard

LUNGHEZZA TERMINALI / CABLE LENGTH  
00=0 02=0.2m 05=0.5m 10=1m xx=xxm

CONNESSIONE ELETTRICA  
ELECTRICAL CONNECTION  
C=1 x cavo H03VV-F 2x0.5mm<sup>2</sup> / 1 x cable H03VV-F 2x0.5mm<sup>2</sup>  
F=2 x filo 0.20mm<sup>2</sup> (AWG24) / 2 x wire 0.20mm<sup>2</sup> (AWG24)  
M=morsetto / terminal block P=pipetta / pipette (P: solo/only SEMx7)

GRADO IP / IP DEGREE  
D=40 E=54 F=65 G=67 (G: solo/only SEMx7)

DISTRIBUTORE AUTORIZZATO  
AUTHORIZED DISTRIBUTOR

